



## FDUT15KXE6F-E

1.5kW

### Specifications

Nominal cooling capacity		kW	1.5
Nominal heating capacity		kW	1.7
Power source			1 Phase 220-240V, 50Hz
Power consumption	Cooling	kW	0.06-0.06
	Heating	kW	0.06-0.06
Sound power level		dB(A)	52
Sound pressure level (1)		dB(A)	Hi:28 Me:26 Lo:22
Sound pressure level (2)		dB(A)	Hi:32 Me:29 Lo:25
Exterior dimensions unit	H x W x D	mm	200x750x500
Net weight		kg	21
Air flow		m <sup>3</sup> /min	Hi:6 Me:5 Lo:4
Maximum external static pressure		Pa	Standard:10, Max:35
Outside air intake			Possible from return duct
Air filter, Q'ty			Filter set:UT-FL1EF/UT-FL2EF/UT-FL3EF(option)
Remote control(option)			wired:RC-EX3A, RC-E5, RCH-E3 wireless:RCN-KIT4-E2
Installation data Refrigerant piping size		mm(in)	Liquid line:ø6.35(1/4") Gas line:ø9.52(3/8")

The data are measured under the following conditions(ISO-T1).

Cooling: Indoor temp. of 27°CDB, 19°CWB, and outdoor temp. of 35°CDB.

Heating: Indoor temp. of 20°CDB, and outdoor temp. of 7°CDB, 6°CWB.

External static pressure of indoor unit is 10Pa.

The sound level indicates the value of rear-intake type with duct in anechoic chamber. During operation these values are somewhat higher due to ambient conditions.

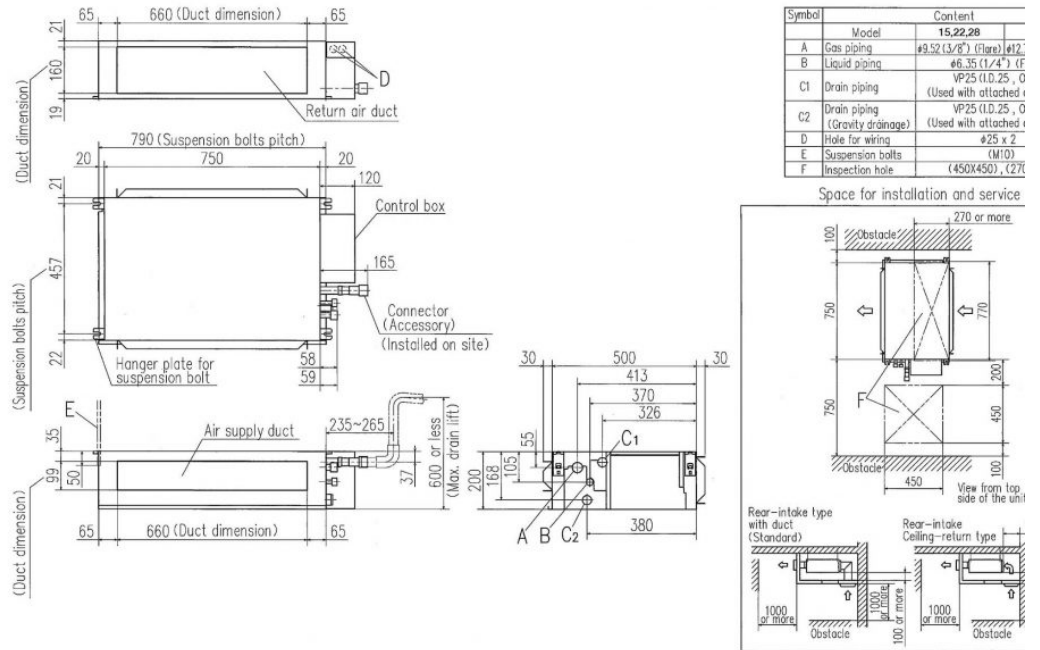
The data of nominal cooling and heating capacity and sound pressure level are measured with 10Pa of external static pressure.

Sound pressure levels are values when 2m supply duct and 1m return duct are connected.

1 : Mike position is 1.5m below unit, 2 : Mike position is 1m in front and 1m below the air supply duct.

Schematics

15KXE6F-E, 22KXE6F-E, 28KXE6F-E, 36KXE6F-E



Symbol	Content
	Model 15.22.28
A	Gas piping #9.52 (3/8") (1/2") #12
B	Liquid piping #6.35 (1/4") (F)
C1	Drain piping VP25 (I.D. 25, 0 (Used with attached r
C2	Drain piping VP25 (I.D. 25, 0 (Gravity drainage) (Used with attached r
D	Hole for wiring #25 x 2
E	Suspension bolts (M10)
F	Inspection hole (450X450), (272

Space for installation and service

