



FDUH22KXE6F

Specifications

Nominal cooling capacity		kW	2.2
Nominal heating capacity		kW	2.5
Power source			1 Phase 220-240V, 50Hz
Power consumption	Cooling	kW	0.05-0.07
	Heating	kW	0.05-0.07
Sound power level		dB(A)	60
Sound pressure level Cooling		db(A)	P-Hi:39 Hi: 33 Me: 30 Lo: 27
Exterior dimensions unit	H x W x D	mm	257x570x530
Net weight		kg	22
Air flow		m ³ /min	P-Hi:8.5 Hi: 7 Me: 6.5 Lo: 6
Maximum external static pressure		Pa	30
Outside air intake			Possible from return duct
Air filter, Q'ty			Filter kit:UH-FL1E(option)
Remote control(option)			wired:RC-EX3A, RC-E5, RCH-E3 wireless:RCN-KIT4-E2
Installation data Refrigerant piping size		mm(in)	Liquid line:ø6.35(1/4") Gas line:ø9.52(3/8")

The data are measured under the following conditions(ISO-T1).

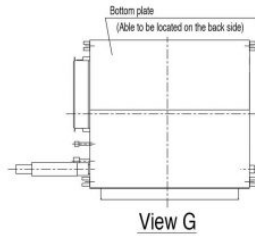
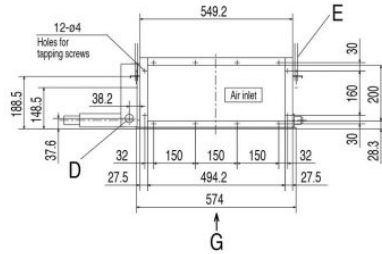
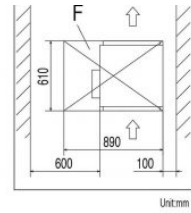
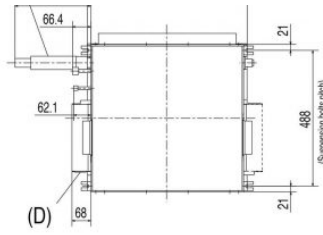
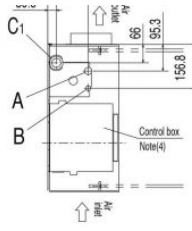
Cooling: Indoor temp. of 27°CDB, 19°CWB, and outdoor temp. of 35°CDB.

Heating: Indoor temp. of 20°CDB, and outdoor temp. of 7°CDB, 6°CWB.

External static pressure of indoor unit is 10Pa.

The sound level indicates the value of rear-intake type with duct in anechoic chamber. During operation these values are somewhat higher due to ambient conditions.

Schematics



Notes

- (1) The model name label is attached on the fan case inside the air return grille.
- (2) Prepare the connecting socket (VP20) on site. (As for drain piping, it is possible to choose C1 or C2)
- (3) When control box is located on the reverse side, installation space should be modified to new location.
- (4) Control box and Drain hose piece are able to be relocated on the reverse side.

In case of Bottom air intake

Simple remote control