



## FDU650FKXZE1

### Specifications

Nominal cooling capacity		kW	9.0
Nominal heating capacity		kW	6.5
Power source			1 Phase 220-240V, 50Hz
Power consumption	Cooling	kW	0.24-0.25
	Heating	kW	0.24-0.25
Sound pressure level Cooling		db(A)	Hi:31
Exterior dimensions unit	H x W x D	mm	280x950x635
Net weight		kg	34
Air flow		m <sup>3</sup> /min	Hi:11
Maximum external static pressure		Pa	200 (at Hi Air flow)
Air filter, Q'ty			Procure locally
Remote control(option)			wired:RC-EX3A, RC-E5, RCH-E3 wireless:RCN-KIT4-E2
Installation data Refrigerant piping size		mm(in)	Liquid line:ø9.52(3/8") Gas line:ø15.88(5/8")

The data are measured under the following conditions(ISO-T1).

Cooling: Indoor temp. of 27°CDB, 19°CWB, and outdoor temp. of 35°CDB.

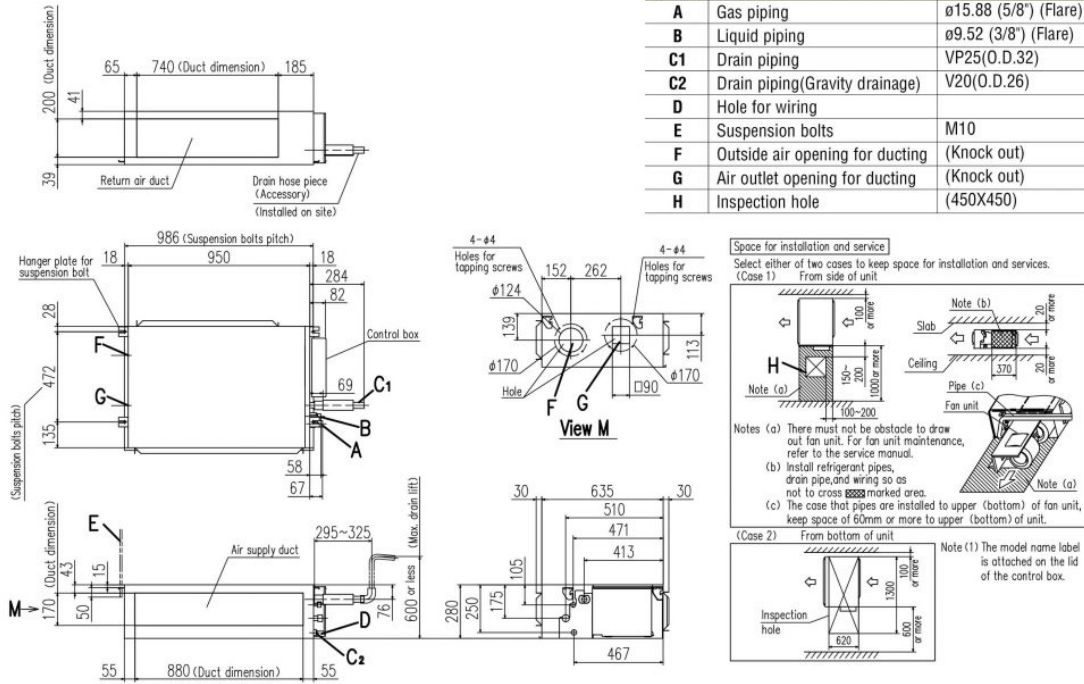
Heating: Indoor temp. of 20°CDB, and outdoor temp. of 7°CDB, 6°CWB.

External static pressure of indoor unit is 10Pa.

The sound level indicates the value of rear-intake type with duct in anechoic chamber. During operation these values are somewhat higher due to ambient conditions.

Schematics

FDU650FKXZE1



Symbol	Content	
A	Gas piping	ø15.88 (5/8") (Flare)
B	Liquid piping	ø9.52 (3/8") (Flare)
C1	Drain piping	VP25(O.D.32)
C2	Drain piping(Gravity drainage)	V20(O.D.26)
D	Hole for wiring	
E	Suspension bolts	M10
F	Outside air opening for ducting	(Knock out)
G	Air outlet opening for ducting	(Knock out)
H	Inspection hole	(450X450)

