



## FDTW45KXE6F

4.5kW

### Specifications

Nominal cooling capacity		kW	4.5
Nominal heating capacity		kW	5.0
Power source			1 Phase 220-240V, 50Hz
Power consumption	Cooling	kW	0.10-0.10
	Heating	kW	0.10-0.10
Sound power level		dB(A)	58
Sound pressure level Cooling		db(A)	P-Hi:42 Hi:38 Me:34 Lo:31
Exterior dimensions unit	H x W x D	mm	Unit:325x820x620 Panel:20x1120x680
Net weight		kg	Unit:21 Panel:8.5
Air flow		m <sup>3</sup> /min	P-Hi:14.5 Hi:12 Me:10 Lo:9
Outside air intake			Possible
Panel			TW-PSA-26W-E
Air filter, Q'ty			Pocket Plastic net x2 (Washable)
Remote control(option)			wired:RC-EX3A, RC-E5, RCH-E3 wireless:RCN-TW-E2
Installation data Refrigerant piping size		mm(in)	Liquid line:ø6.35(1/4") Gas line:ø12.7(1/2")
Refrigerant		Type/GWP	R410A / 2088

The data are measured under the following conditions(ISO-T1).

Cooling: Indoor temp. of 27°CDB, 19°CWB, and outdoor temp. of 35°CDB.

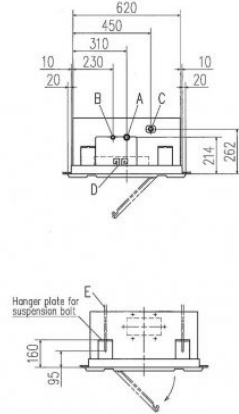
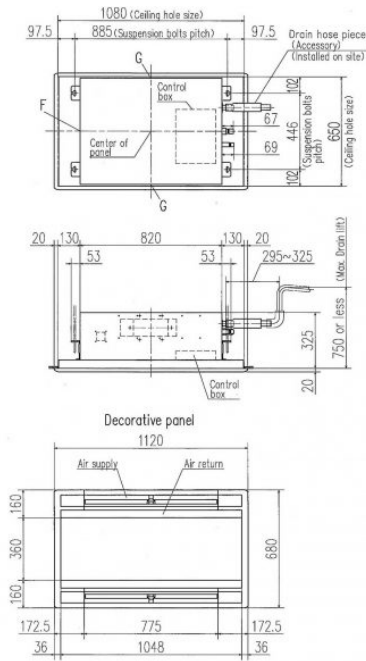
Heating: Indoor temp. of 20°CDB, and outdoor temp. of 7°CDB, 6°CWB.

External static pressure of indoor unit is 10Pa.

The sound level indicates the value of rear-intake type with duct in anechoic chamber. During operation these values are somewhat higher due to ambient conditions.

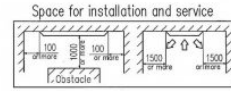
Schematics

FDTW28KXE6F, 45KXE6F, 56KXE6F, 71KXE6F



Symbol	Model	28	45, 56	71
A	Gas piping	#1/2 (3/8") (flare)	#2 (1/2") (flare)	#3/8 (5/8") (flare)
B	Liquid piping	#6.35 (1/4") (Flare)	#6.35 (1/4") (flare)	#6.35 (1/4") (flare)
C	Drain piping	VP25 (O.D. 32)		
D	Hole for wiring			
E	Suspension bolts		(M10)	
F	Outside air opening for ducting		(Knock out)	
G	Air outlet opening for ducting		(Knock out)	

Notes (1) The model name label is attached on the lid of the control box.



Make a space of 4000 or more between the units when installing more than one.