



FDTC40VH

4.0kW

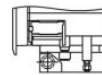
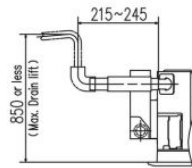
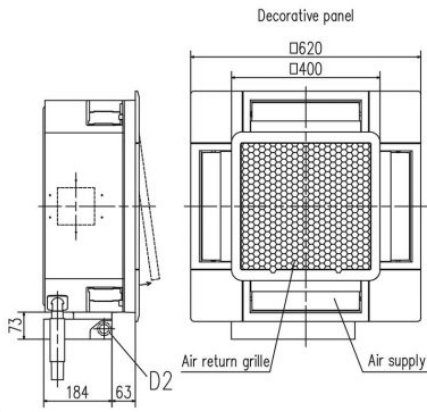
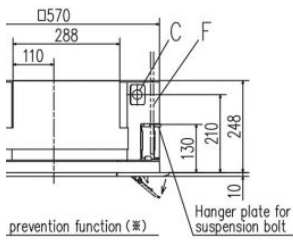
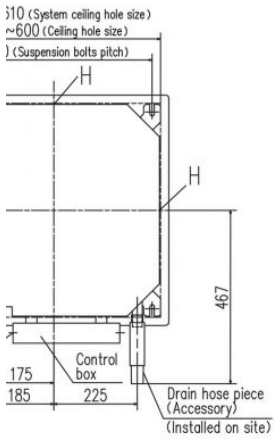
Specifications

Nominal cooling capacity		kW	4.0
Nominal heating capacity		kW	4.5
Sound power level	Cooling	dB(A)	59
	Heating	dB(A)	59
Sound pressure level	Cooling(Hi/Me/Lo/Ulo)	dB(A)	P-Hi : 44 Hi : 40 Me : 35 Lo : 27
	Heating(Hi/Me/Lo/Ulo)	dB(A)	P-Hi : 44 Hi : 40 Me : 35 Lo : 27
Air flow	Cooling(Hi/Me/Lo/Ulo)	m ³ /min	P-Hi : 13 Hi : 11 Me : 9 Lo : 7
	Heating(Hi/Me/Lo/Ulo)	m ³ /min	P-Hi : 13 Hi : 11 Me : 9 Lo : 7
Exterior dimensions (H×W×D)		mm	248 x 570 x 570
Exterior panel dimensions (H×W×D)		mm	10 x 620 x 620
Net weight		kg	16.5 (Unit : 14 Panel : 2.5)
Refrigerant piping size	Liquid / Gas	mm ø	6.35(1/4") / 12.7(1/2")
Clean filter			-

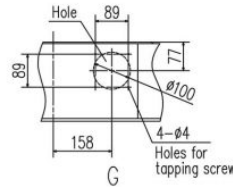
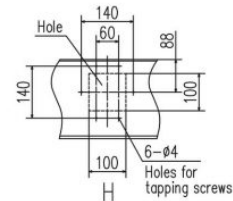
- The data is measured under the following conditions(ISO-T1, H1). Cooling: Indoor temp. of 27°CDB, 19°CWB, and outdoor temp. of 35°CDB. Heating: Indoor temp. of 20°CDB, and outdoor temp. of 7°CDB, 6°CWB.
- Sound level the value in an anechoic chamber. During operation these values are somewhat higher due to ambient conditions.

Schematics

1 FDTC35VH1 FDTC40VH FDTC50VH FDTC60VH



D1



- Notes
- (1) The model name label is attached to the control box lid.
 - (2) This unit is designed for 2x2 grid ceiling. If it is installed on a ceiling other than 2x2 grid ceiling, provide an inspection opening on the control box side.
 - (3) Draft prevention function (※) is provided on the panel TC-P

Symbol	Content	Content
A	Gas piping	25-35 40-60
B	Liquid piping	
C	Drain piping	
D1	Power supply connection	
D2	Remote control code and signal wiring connection	
F	Suspension bolts	
G	Outside air opening for ducting	
H	Air outlet opening for ducting	
J	Inspection opening	

